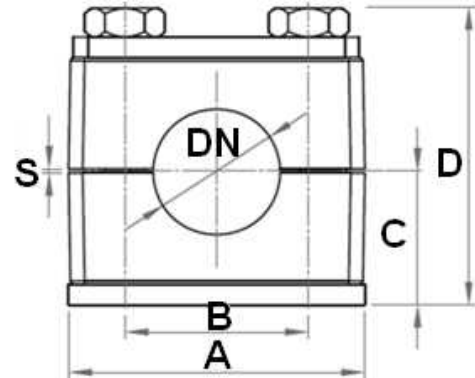


Clamps for pipe - TrAle

Light serie clamp

Light series reinforced clamp

Page: 1/2



DIN 3015/1

Temperature: -30°C + 90°C

Material Metal parts: carbon steel St 37-2
Clamps: Polypropilene

Part nº	DN		u/ Bag	A	B	C	D	S
A41AZ06	6	1	10	36	20	16,5	37	0.4
A41AZ08	8	1	10	36	20	16,5	37	0.4
A41AZ10	10	1	10	36	20	16,5	37	0.4
A41AZ12	12	1	10	36	20	16,5	37	0.4
A41AZ13.2	1/4"	2	10	42	26	19,5	43	0.6
A41AZ14	14	2	10	42	26	19,5	43	0.6
A41AZ15	15	2	10	42	26	19,5	43	0.6
A41AZ16	16	2	10	42	26	19,5	43	0.6
A41AZ16.7	3/8"	2	10	42	26	19,5	43	0.6
A41AZ18	18	2	10	42	26	19,5	43	0.6
A41AZ20	20	3	10	50	33	21	46	0.6
A41AZ21.3	1/2"	3	10	50	33	21	46	0.6
A41AZ22	22	3	10	50	33	21	46	0.6
A41AZ25	25	3	10	50	33	21	46	0.6
A41AZ26.7	3/4"	4	10	60	40	24	52	0.6
A41AZ28	28	4	10	60	40	24	52	0.6
A41AZ30	30	4	10	60	40	24	52	0.6

Clamps for pipe - TrAle

Light serie clamp

Light series reinforced clamp

Page: 2/2

Part nº	DN		u/ Bag	A	B	C	D	S
A41AZ33.7	1"	5	10	71	52	32	68	0.8
A41AZ35	35	5	10	71	52	32	68	0.8
A41AZ38	38	5	10	71	52	32	68	0.8
A41AZ40	40	5	10	71	52	32	68	0.8
A41AZ42	42	5	10	71	52	32	68	0.8
A41AZ44.5	44.5	6	10	88	66	36	76	0.8
A41AZ48.3	1"1/2	6	10	88	66	36	76	0.8
A41AZ50.8	50.8	6	10	88	66	36	76	0.8

*** Review attached PDF***